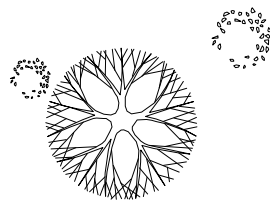
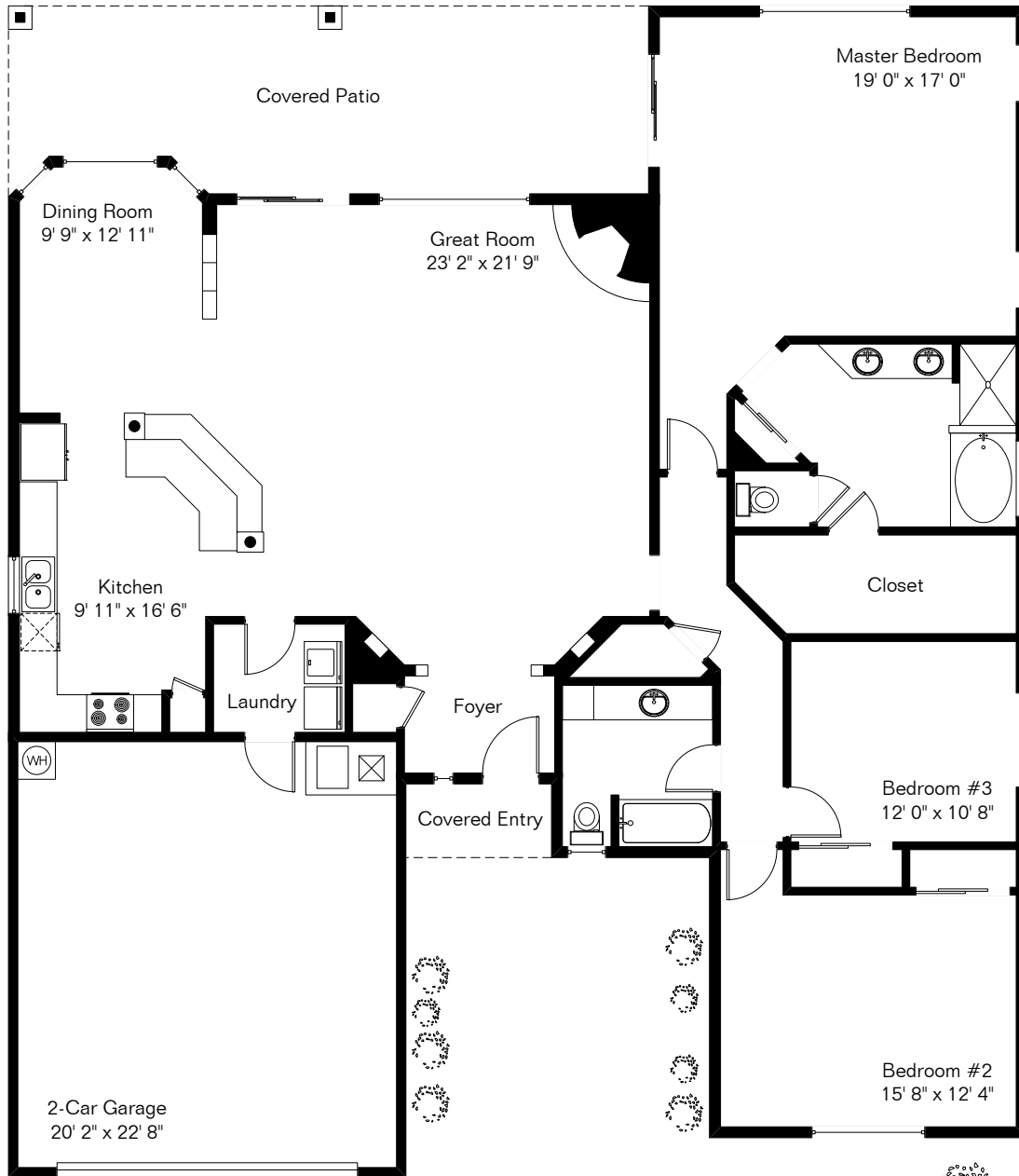
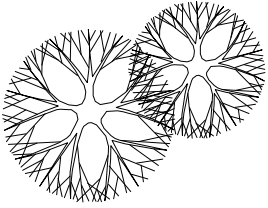


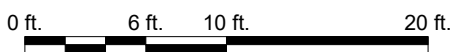
The square footages and room size information are deemed to be reliable but are not guaranteed and should be independently verified.

40000 S Horse Run Dr

Presented by Pam Treece
Long Realty Company
(520) 275-2664



Site Visit October 2013



Living Area 2,228 Sq Ft
Garage 489 Sq Ft

Copyright 2018 Floor Plans First! LLC
All Rights Reserved.

www.FloorPlansFirst.com

Toll Free (877) 887-1500
Voice (520) 881-1500
Fax (520) 791-7701

